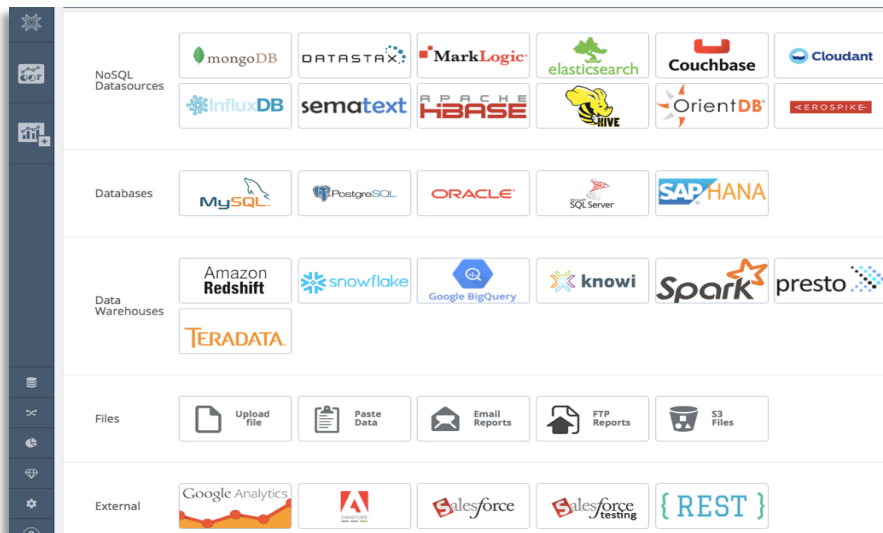


Native Analytics on Modern Data

WHY NATIVE MATTERS

Data stacks are changing to manage the volume and velocity of Big Data and IoT data. However, most analytics solutions have failed to keep pace with innovations in data and remain stuck in the structured data dark ages. As a result, business teams are forced to wait for IT to define schemas and manipulate unstructured data to shoehorn it back into relational structures. In addition to frustrating business groups, these steps add cost, data architecture complexity and place limits on accessible data across the enterprise.

Knowi is different. Knowi is the first analytics platform that natively understands unstructured, multi-structured as well as traditional structured data, enabling data engineers to instantly visualize insights without first having to move or transform the data. By leaving data in place and eliminating the need for ETL and data prep, Knowi significantly reduces the cost, time to market and complexity of your analytics projects.



Knowi is part of a new generation of analytics platforms purpose-built for modern data stacks. Knowi natively connects to your data source(s), performs a schema-on-read to discover data instantly and enables you to start visualizing your data literally in minutes using over 30 visualization options. With Cloud, on-premise or hybrid deployment options, Knowi securely delivers enterprise business intelligence, anywhere, anytime to everyone.

SUMMARY

Knowi is a leading provider of analytics on multi-structured data. Knowi natively integrates to most NoSQL data sources for instant data discovery visualization.

KEY FEATURES

- ❖ Native integration to NoSQL stores
- ❖ Drag & drop query generation
- ❖ Blend data with other sources
- ❖ Natural language processing
- ❖ Over 30 Visualizations
- ❖ Share or Embed Dashboards
- ❖ Integrated Machine Learning
- ❖ OEM Options

BENEFITS

- ❖ Instantly visualizes your data
- ❖ Simplifies analytics architecture by eliminating need for ODBC drivers, ETL, etc.
- ❖ Fastest way to provide the business with a unified view of enterprise data
- ❖ Automates data-driven actions with configurable triggers
- ❖ Business users ask questions in plain English and get visual answers
- ❖ Go beyond insights to predictive analytics and prescriptive actions

For more information, go to our website:

<https://knowi.com/>

ANALYTICS FOR MODERN DATA

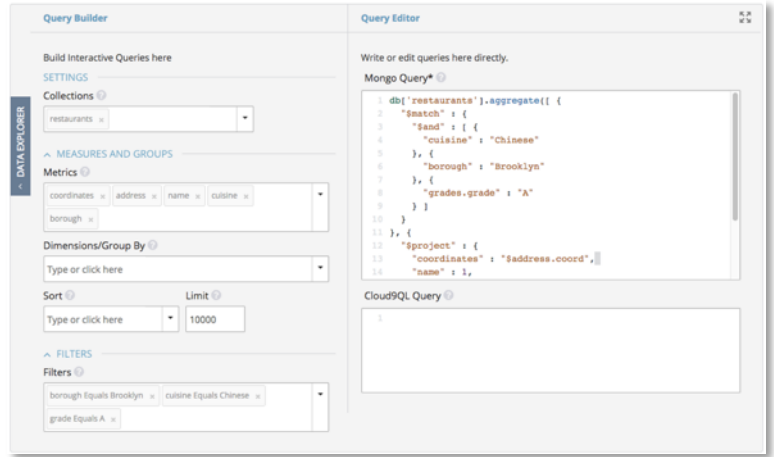
Knowi is unified business analytics platform that streamlines the process of analytics from all your data enabling you to uncover new insights and unlock more value from your data strategies.

Native NoSQL Integration, Query Generation, and Multi-Data Source Joins

Knowi integrates natively, enabling users to:

- Instantly discover data
- Automatically generate NoSQL queries
- Join data across NoSQL, SQL, file-based, or REST-API sources.

With Knowi, you can blend unstructured and structured data and visualize it in minutes. Forget about learning proprietary query languages like MongoDB QL, Marklogic XQuery, or Couchbase N1QL, Knowi auto-generates the native query through our drag & drop interface.



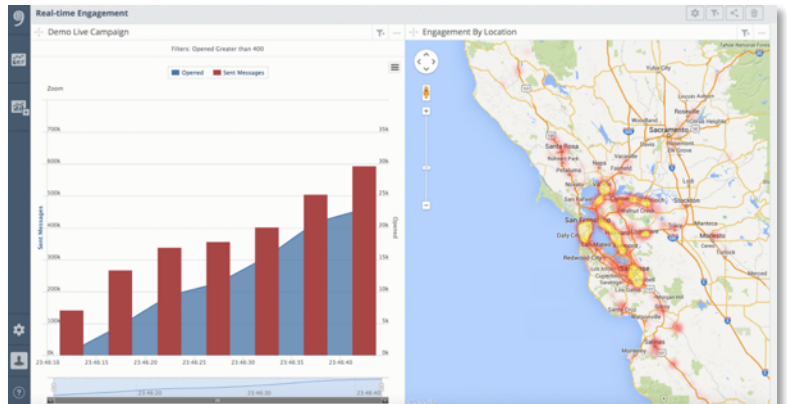
Natural Language BI

Make it easy for business teams to use analytics without having to learn a new BI tool. With natural language BI, business users simply type their questions in plain English and instantly get answers they can visualize and share. They can customize the visualizations and create personal dashboards in minutes. With our NLP API, you can enable natural language BI capabilities with applications your business user are already using.

Embed Dashboards in Data Applications

Data application developers can use Knowi to embed analytics directly into their data applications using:

- Simple URL based embedding
- Secure URL embed with encrypted request payload
- Single Sign-on API that enables token exchange



Integrate Machine Learning for Advanced Analytics

With a few clicks, you start putting your data to work by leveraging it for predictive and prescriptive analytics within the Knowi platform. Knowi's includes built-in algorithms and the ability to train your models using historic data. Once trained, you simply add the model to your query and your model is in production. Drive actions from your data by configuring trigger actions such as calling external API's and sending notifications via Slack.

<https://www.knowi.com/>