

Knowi on MongoDB

Powerful Native Analytics for Your Modern Data Stack

WHY NATIVE ANALYTICS ON MONGODB MATTERS

MongoDB is the leading NoSQL database that enables enterprises to store and query large amounts of multi-structured data. Built for modern data, MongoDB is quickly becoming an integral part of many enterprise data stacks. However, while the data stack is modernizing for optimal use of multi-structured data, traditional analytics platforms are stuck in the structured data past.

Traditional analytics platforms are architected in a way that makes it virtually impossible for them to understand anything other than structured data natively. As a result, analytics on MongoDB's unstructured data requires additional steps to move data out of MongoDB and back into relational structures either by using the BI Connector or through ETL for these tools to work.

As a result, Business teams are forced to wait for IT to define schemas, move the data back into relational structures, and prep it before they can start visualizing it. In addition to frustrating business teams, adding these steps adds cost, complexity and artificial limits on accessible data across the enterprise.

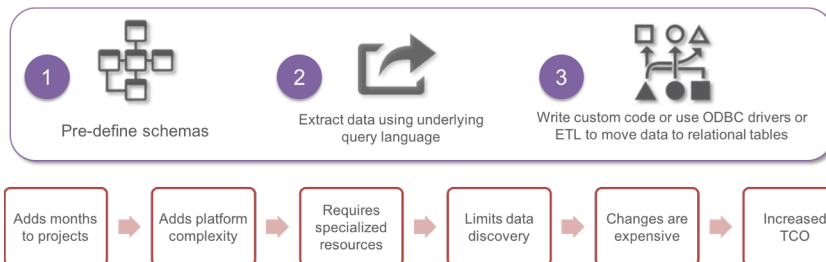


Figure 1. Hidden Costs of SQL-Based Business Intelligence Tools

Knowi is part of a new generation of analytics platforms purpose-built for modern data stacks that include structured, unstructured and multi-structured data. Knowi instantly connects to your MongoDB instance, discover collections, and enables you to visualize your data, literally in minutes.

SUMMARY

Knowi is a leading provider of NoSQL analytics and includes native integration to MongoDB for instant data reporting, visualization, and analytics.

KEY FEATURES

- ❖ Native integration to MongoDB
- ❖ MongoDB QL query generation
- ❖ Merge data across MongoDB Collections or with other sources
- ❖ Over 30 Visualizations
- ❖ Sharable and Embeddable Dashboards
- ❖ Integrated Machine Learning
- ❖ OEM Options

MONGODB + KNOWI BENEFITS

- ❖ Instantly visualizes MongoDB data
- ❖ Simplifies analytics architecture by eliminating need for BI Connector, ETL, etc.
- ❖ Provides the business with a unified view of their enterprise data
- ❖ Automates data-driven actions

For more information, go to our website:

<https://knowi.com/mongodb-analytics>

MONGODB + KNOWI: ANALYTICS FOR MODERN DATA

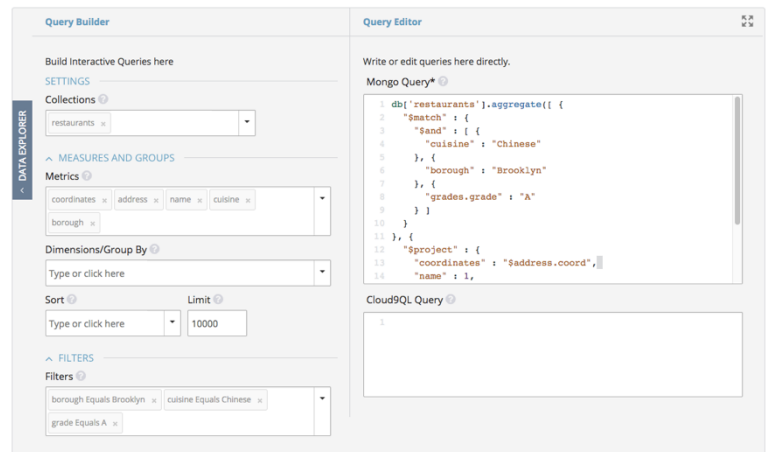
Knowi is unified business analytics platform that streamlines the process of analytics from MongoDB data enabling you to uncover new insights and unlock more value from your MongoDB investment.

Native MongoDB Integration, Query Generation and Multi-datasource Joins

Knowi integrates natively, enabling users to:

- Instantly discover collections
- Generate native MongoDB QL queries
- Join data across MongoDB collections or with other NoSQL, SQL, file-based, or REST-API sources.

With Knowi, you can eliminate the need for data prep tools and visualize your MongoDB data in minutes. Knowi's native integration gives you access to all the power of MongoDB QL but without the learning curve.



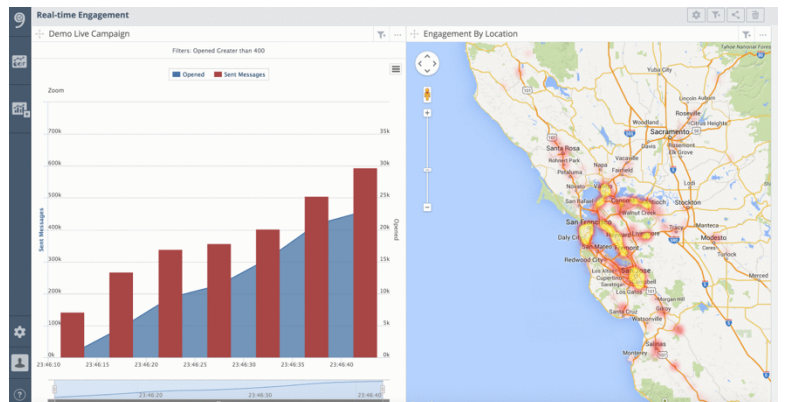
Business-Driven Analytics, Collaboration and Sharing

With over 30 visualizations, business users can customize their dashboards and share them with other users or groups, either individually or automatically. Role-based access controls automatically filter data so users only see the data they are authorized to view. Alternatively, users can generate PDF reports to share with non-Knowi users so analytics data are always accessible.

Embed Dashboards in Data Applications

Data application developers can use Knowi to embed MongoDB analytics directly into their data applications using:

- Simple URL based embedding.
- Secure URL embed with encrypted request payload
- Single SignOn API that enables token exchange



Integrate Machine Learning for Advanced Analytics

MongoDB customers can leverage their data for predictive and prescriptive analytics within the Knowi platform. Use Knowi's built-in algorithms, train your models and integrate models into your MongoDB analytics workflows and then configure trigger actions based on the results. Knowi quickly enables MongoDB customers to take their data analytics to the next level without any additional investment.

CASE STUDY - LEMONAID HEALTH

Lemonaid Health is an innovator in telehealth services. As of April 2017, their team of doctors treat things like sinus infections, UTIs, acne, acid reflux or write prescriptions for birth control pills.

(<http://lemonaidhealth.com>) As new services and new States roll out, understanding service performance in near real-time is critical.

In the beginning, Lemonaid Health, like many, started with Excel spreadsheet to disseminate information throughout the organization. That had two challenges:

- 1) Ensuring people had the latest information and
- 2) Heavy reliance on the engineering team to create and run SQL queries and then transcribe the results to Excel spreadsheets. `

Using hybrid deployment, enabled a cloud implementation of Knowi connected to on premise instances of MySQL and MongoDB. Additionally, with other security features, like two-factor authentication, Lemonaid was able to ensure patient data security without sacrificing real-time visualizations of business performance to their end users and partners.

Lemonaid's commercial partners access Knowi directly using filters to limit their view to only their data. Within the dashboards, their partners have full capabilities to run ad-hoc queries, change data filters or visualizations and save them as custom reports.

In addition to direct access for near real-time reporting, Lemonaid extensively use Knowi's sharing capabilities to send out PDF reports to offline users, ensuring everyone, company-wide, as access to up to the moment performance data.

The initial goal of creating a company-wide unified view of all business performance data was quickly achieved. Having real-time information about how services were performing was critical as Lemonaid rolled out new services to States and added new States. It allowed them to identify where adjustments were needed quickly. "It gave us a health check to make sure our mobile application and website was functioning as expected," says Simon.

Data Source(s)

MySQL

MongoDB

Key Results

- ❖ Transitioned to a data-driven enterprise in a few months
- ❖ Created data-driven product offerings for partners
- ❖ Used predictive analytics to guide service expansion
- ❖ Reduced operating cost by 25%

*"To be able to put up some real-time dashboards that showed what was going on at any point in time was key business information," says **Simon Williams, CTO, Lemonaid Health**. "... [It] helped create a great buzz in the office as we displayed it on a large screen and could see counters going up as we served new patients."*

ABOUT MONGODB

MongoDB was founded in 2007 by Dwight Merriman, Eliot Horowitz and Kevin Ryan – the team behind DoubleClick.

MongoDB, Inc. is the company behind the database for GIANT ideas, offering the best of traditional databases as well as the flexibility, scale and performance today's applications require. They build MongoDB and the drivers, offer software and services, run MongoDB University (which has trained over 350,000 engineers in MongoDB), and sponsor the MongoDB community.

MongoDB has offices across North America, Europe, and Asia-Pacific.

ABOUT KNOWI

Knowi, formerly Cloud9 Charts, was incorporated in 2014 in Oakland, CA with the purpose of dramatically shortening the distance from raw data to action. With native integration to virtually any data source, including NoSQL, SQL, RDBMS, file-based and API's, Knowi eliminates the need for ETL, ODBC drivers, or data transformation processes that alternate solutions require. Data engineers can join structured and unstructured data sources to create blended data sets and instantly visualize the results, apply machine learning algorithms, embed results in data applications, share dashboards with business users, or trigger actions to other downstream applications or notification systems.

Knowi is a global company with customers in the Americas, Europe, Middle East and Asia supporting businesses of all sizes from startups to large multi-national enterprises. Knowi is a complete business intelligence platform for enterprises, of any size, who want to unify analytics across their modern data stack and drive actions that matter.

Contact Information

Website: <https://knowi.com>

Email: info@knowi.com

US Headquarters

344 20th St.

Oakland, CA 94612